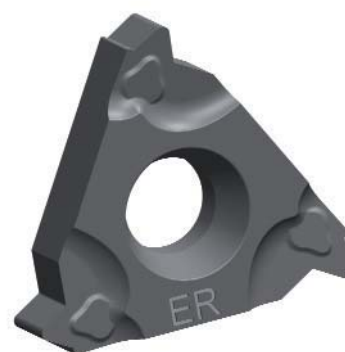



TPM SÚSTRUŽENIE ZÁVITOV



VONKAJŠIE ZÁVITOVANIE


OZNAČENIE ZÁVITU		ITEM NR.	POPIS		POČET ZÁBEROV	POVLAK. KARBID JP5125 P M K
PLNÝ PROFIL	M	NT600987	16ER100ISO-TPM	1.0 mm	5÷8	6,63€/ks
		NT600988	16ER125ISO-TPM	1.25 mm	6÷9	
		NT600989	16ER150ISO-TPM	1.5 mm	6÷9	
		NT601027	16ER175ISO-TPM	1.75 mm	8÷11	
		NT600990	16ER200ISO-TPM	2.0 mm	8÷11	
		NT600991	16ER250ISO-TPM	2.5 mm	10÷13	
		NT601029	16ER300ISO-TPM	3.0 mm	12÷15	
	W	NT601028	16ER19W-TPM	19 TPI	6÷9	
		NT601026	16ER14W-TPM	14 TPI	8÷11	
		NT601025	16ER11W-TPM	11 TPI	9÷12	
	UN	NT601249	16ER14UN-TPM	14 TPI	8÷11	
		NT601248	16ER12UN-TPM	12 TPI	8÷11	
	NPT	NT601236	16ER18NPT-TPM	18 TPI	8÷11	
		NT601235	16ER14NPT-TPM	14 TPI	10÷13	
		NT601234	16ER11.5NPT-TPM	11.5 TPI	12÷15	
	BSPT	NT601243	16ER28BSPT-TPM	28 TPI	5÷8	
NT601242		16ER19BSPT-TPM	19 TPI	6÷9		
NT601241		16ER14BSPT-TPM	14 TPI	9÷12		
NT601240		16ER11BSPT-TPM	11 TPI	12÷15		
ČIASTOČNÝ PROFIL	55°	NT601252	16ERAG55-TPM	40÷8 TPI	-	
	60°	NT601226	16ERAG60-TPM	0.5÷3.0 mm 48÷8 TPI	-	



BOX 5 KS.



VNÚTORNÉ ZÁVITOVANIE

OZNAČENIE ZÁVITU		ITEM NR.	POPIS		POČET ZÁBEROV	POVLAK. KARBID JP5125 P M K
PLNÝ PROFIL	M	NT600992	16IR100ISO-TPM	1.0 mm	5÷8	6,63€/ks
		NT601031	16IR125ISO-TPM	1.25 mm	6÷9	
		NT600993	16IR150ISO-TPM	1.5 mm	6÷9	
		NT601033	16IR175ISO-TPM	1.75 mm	8÷11	
		NT600994	16IR200ISO-TPM	2.0 mm	8÷11	
		NT601035	16IR250ISO-TPM	2.5 mm	10÷13	
		NT601036	16IR300ISO-TPM	3.0 mm	12÷15	
	W	NT601034	16IR19W-TPM	19 TPI	6÷9	
		NT601032	16IR14W-TPM	14 TPI	8÷11	
		NT601030	16IR11W-TPM	11 TPI	9÷12	
	UN	NT601251	16IR14UN-TPM	14 TPI	8÷11	
		NT601250	16IR12UN-TPM	12 TPI	8÷11	
	NPT	NT601239	16IR18NPT-TPM	18 TPI	8÷11	
		NT601238	16IR14NPT-TPM	14 TPI	10÷13	
		NT601237	16IR11.5NPT-TPM	11.5 TPI	12÷15	
	BSPT	NT601247	16IR28BSPT-TPM	28 TPI	5÷8	
NT601246		16IR19BSPT-TPM	19 TPI	6÷9		
NT601245		16IR14BSPT-TPM	14 TPI	9÷12		
NT601244		16IR11BSPT-TPM	11 TPI	12÷15		
ČIASTOČNÝ PROFIL	55°	NT601253	16IRAG55-TPM	40÷8 TPI	-	
	60°	NT601227	16IRAG60-TPM	0.5÷3.0 mm 48÷8 TPI	-	



BOX 5 KS.